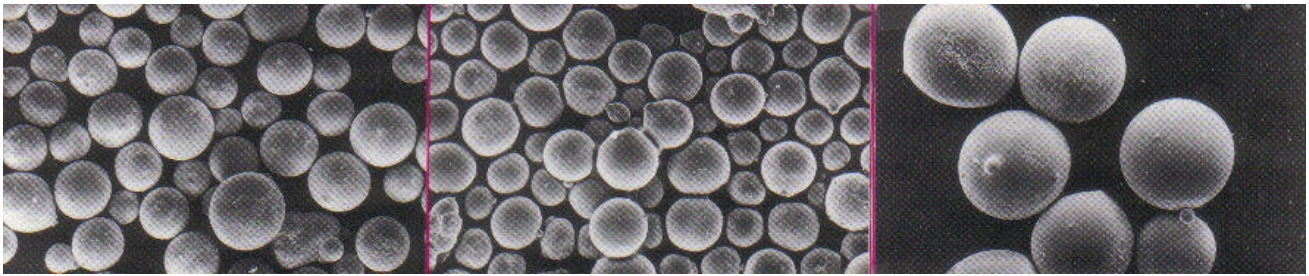


SELF-FLUXING ALLOY POWDERS

Self-Fluxing Alloy Powders are a type of thermal spraying (welding) materials which have functions of self-deoxidization and self-slagformation when melting. The nickel-Chromium-Boron-Silicon series of self-fluxing alloy powders have been successfully used for equipment manufacture and maintenance in the metallurgical, petroleum, chemical and machinery manufacturing industries. Self-Fluxing Alloy Powder can be applied by spraying or welding using commonly available oxygen-acetylene equipment. During thermal spraying or welding, the molten alloy forms a metallurgical bond with the substrate surface. Coatings thus formed are very dense, wear and corrosion resistant up to medium temperatures and adaptable for hardfacing gears, dies, valves and other mechanical components vulnerable to wear.



POWDER	PARTICLE SIZE (MESH)	TYPICAL COMPOSITION (%)	COATING FUNCTION & APPLICATIONS
TS-60A Nickel-Chromium Self-fluxing Alloy Powder	-140+325	Cr: 17.0 B: 3.5 Si: 4.0 C: 1.0 Fe: <5 Ni: Balance	* Melting point 1024°C, Rc=55~60; * Dense, resistant to corrosion, grain abrasion & gas erosion; * Good for slurry pump, tobacco grinding hammer, piston rings and hot forming dies, etc.
TS-60B Nickel-Chromium Self-fluxing Alloy Powder	-140+325	Cr: 17.0 B: 3.5 Si: 4.0 C: 1.0 Fe: <12 Ni: Balance	* Melting point 1024°C, Rc=55~60; * Resistant to wear, corrosion and scuffing; * Good for wet polishing and as hard surfaces for wire extrusion
TS-45B Nickel-Chromium Self-fluxing Alloy Powder	-140+325	Cr: 15.0 B: 3.0 Si: 3.5 C: 0.7 Fe: <12 Ni: Balance	* Melting point 1050°C, Rc=40~50; * Machinable with casted tools; * Good toughness & resistance to strong shock, corrosion & high temperature; * Good for super-hard tool polishing & as exhaust valve sealing surface
TS-35B Nickel-Chromium Self-fluxing Alloy Powder	-140+325	Cr: 10.0 B: 2.5 Si: 3.0 C: 0.4 Fe: <10 Ni: Balance	* Melting point 1080°C, Rc=30~40; * Tolerant, resistant to wear, heat, and strong shock; * Good for gear surface, glass and plastic dies;
TS-25B Nickel-Chromium Self-fluxing Alloy Powder	-140+325	Cr: 8.0 B: 2.0 Si: 2.5 C: 0.2 Fe: <10 Ni: Balance	* Melting point 1120°C, Rc=20~30; * Tolerant, resistant to strong shock and corrosion; * Good as hard surface of glass and plastic dies, etc.